

Guidance for Implementation of Traffic Incident Management Performance Measurement

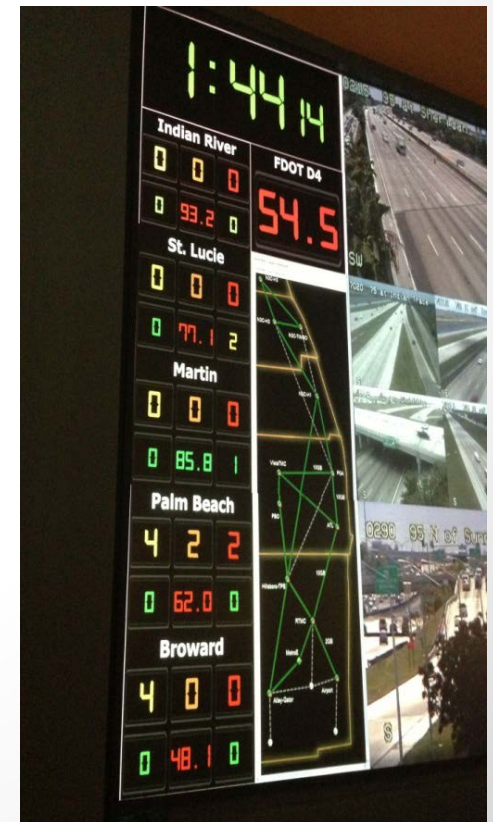
TRB's National Cooperative Highway Research Program (NCHRP) Project 07-20

Kelley Klaver Pecheux, PhD

Applied Engineering Management Corporation (AEM)

T3 Webinar on TIM Performance Measures

June 12, 2014



OVERVIEW OF PRESENTATION

- Project objectives
- Research approach
- Expected research products
- High-level overview of guidance
- Project timeline

PROJECT OBJECTIVES

- Develop concise guidance on the implementation of TIM performance measurement that is applicable to a broad spectrum of transportation and incident responding agencies.
- Develop a model database (including schema) for the data elements and performance measures suitable for eventual aggregation of performance measures at a state and national level.

RESEARCH APPROACH

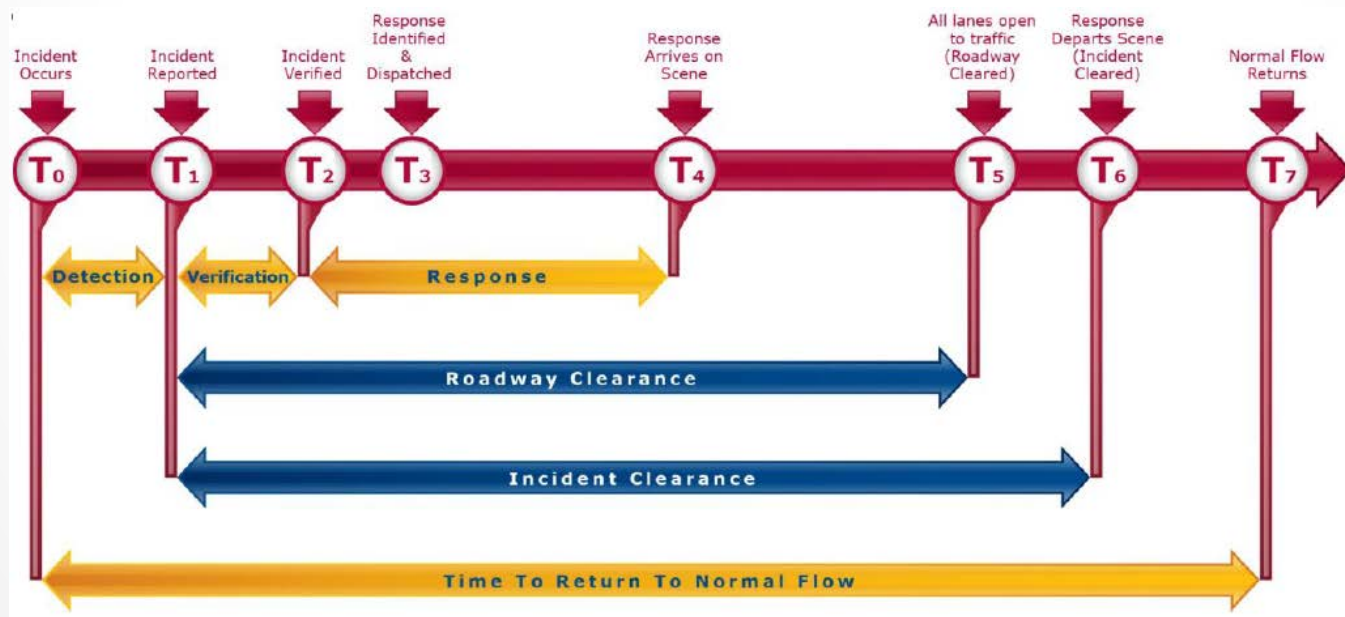
- Conduct a review of existing literature on TIM and TIM performance measurement.
- Conduct limited telephone interviews with TIM agencies/practitioners.

EXPECTED RESEARCH PRODUCTS

- Written guidance document.
 - Download or purchase from TRB.
- Online version of the guidance.
 - Accessible via the TIM Network website.
 - Allow for questions and comments to create a dialogue regarding TIM performance measurement.

HIGH-LEVEL OVERVIEW OF GUIDANCE

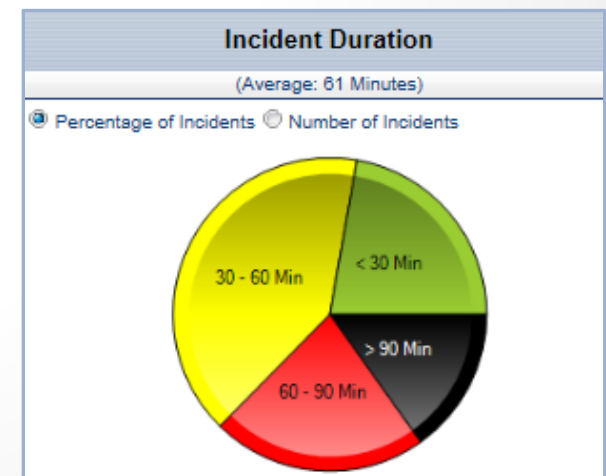
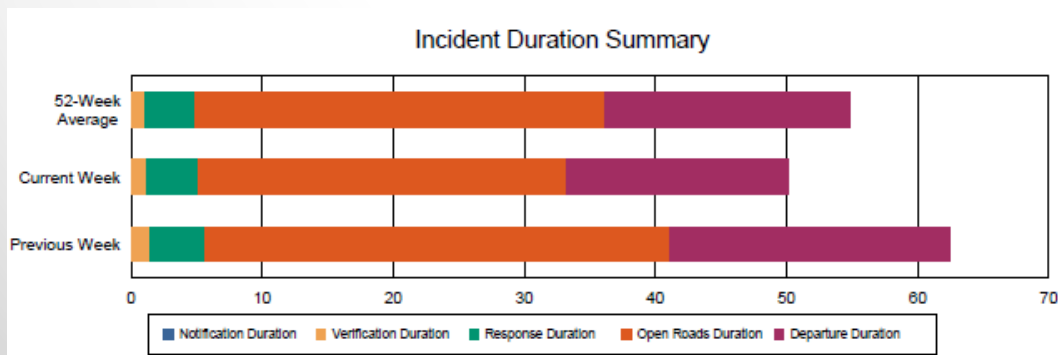
- General guidance on TIM performance measurement.
- Model TIM performance measurement database.



Incident Timeline

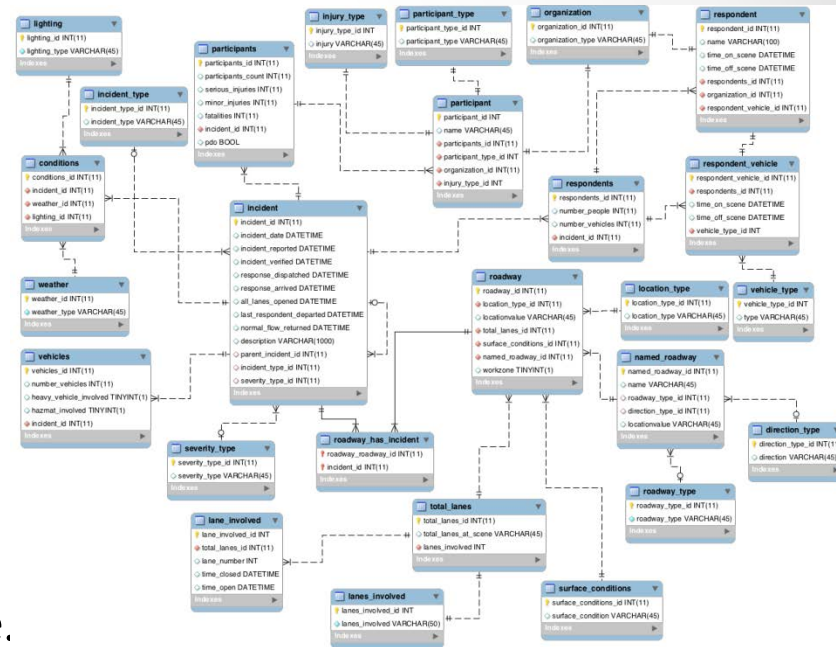
GENERAL GUIDANCE ON TIM PERFORMANCE MEASUREMENT

- TIM performance measures, definitions, and current practices.
- How to calculate the performance measures.
- Putting performance measures into context using data on incident characteristics (e.g., incident severity, lanes blocked).
- Data sources (e.g., TMC, law enforcement, SSP).
- Challenges with TIM data (e.g., inconsistent definitions; availability; quality; data sharing, exchange, and integration).
- Data mining, reporting, and visualization techniques.
- Summary of interviews.
- Key points for success.



MODEL TIM PERFORMANCE MEASUREMENT DATABASE

- Database terminology.
- Data elements.
- Database schema.
- Data dictionary.
- Database scripts for creating the database and populating the look-up tables (downloadable from website).
- Analysis of performance using the various data elements in the database.
- Example applications of the model database, including the selection of performance measures and targets, database queries and scripts, data mining, presentation of performance measures, and interpretation of results.



PROJECT TIMELINE

- Project started in April 2013.
- Revised draft written guidance has been submitted.
- Beginning to develop online version of guidance (over summer).
- Will demo the online guidance to the project panel in Aug/Sept 2014.
- Project will be completed by the end of October 2014.

FOR FURTHER INFORMATION

- Ray Derr, TRB Senior Program Officer
rderr@nas.edu
(202) 334-3231
- Kelley Klaver Pecheux, AEM Corporation
kelley.pecheux@aemcorp.com
(703) 464-7030 ext. 8117
- Bob Brydia, Texas A&M Transportation Institute (TTI)
r-brydia@tamu.edu
(979) 845-8140